



AI ACADEMY

Practitioner's Program



Enabling an AI-powered future for your people

Maintaining a competitive edge in AI is crucial. The Capgemini AI Academy Practitioner's Program brings just that. Delivered by our practitioners to your practitioners, this continuously updated program offers business-relevant, hands-on learning curricula. Tap into state-of-the-art industry insights, technology expertise, leveraging community learning and real-life case studies.

All that is needed to start on this career-enhancing move is a headset and laptop.

In times of uncertainty, it's important to be able to make fast decisions based on insights, rather than intuition, in order to be relevant and stay ahead. The pandemic has brought profoundly different global realities in the short term and transformed longer-term business imperatives. Many organizations are taking stock, reducing risk, and driving sustainability and robustness. For this challenge, your workforce needs to be empowered with the best tools available today.

One key aspect of this is digital upskilling in key areas, ensuring employees maintain a competitive edge. This is where the AI Academy Practitioner's Program can help. It's a powerful tool supporting your ambition to deliver real-world AI solutions at scale.

The program provides access to AI-related capability development offering business-relevant, hands-on learning curricula, and state-of-the-art industry insights, leveraging community learning and real-life case studies.

This continuously updated program, designed and delivered by practitioners for practitioners, has already trained over a thousand Capgemini AI experts. We are delighted to now be able to offer this program externally, enabling others to reap the benefits.

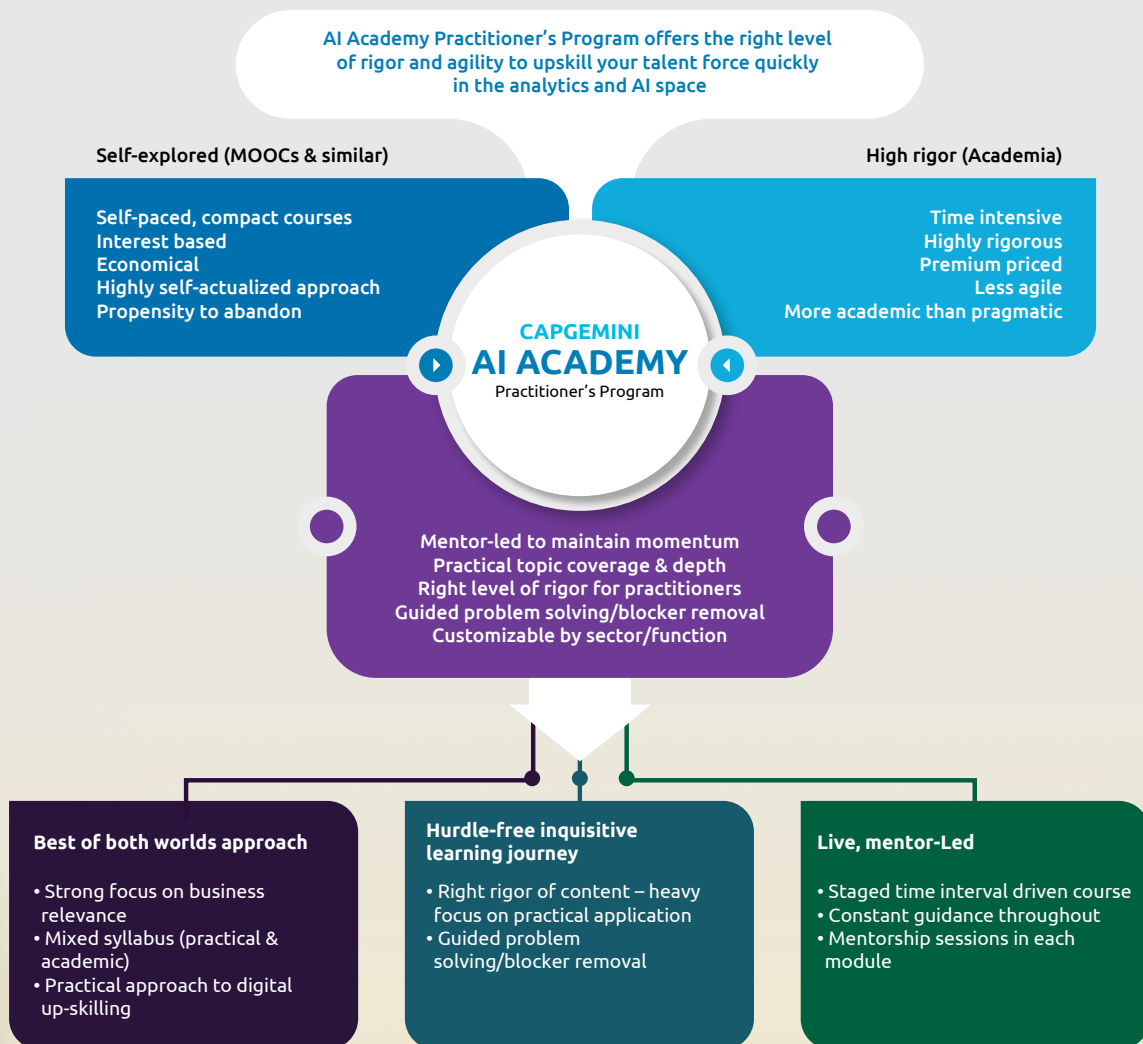


A tailored environment to upskill in AI

Today's organizations recognize how vital AI is to their future, and the demands it makes on people. Enhanced AI skills can benefit roles as diverse as machine learning engineers, analytics professionals, data scientists, AI specialists, AI architects, and solutioning experts.

We know that organizations often struggle to recruit or build the necessary expertise, and then to develop and update it. The AI Academy Practitioner's Program focuses on the most relevant areas, providing you with a tailored digital learning environment to methodically upskill your talent workforce in the AI space.

Capgemini AI Academy Practitioner's Program



Strengthen your workforce to deliver real-world AI solutions at scale

Our program provides practical, business-relevant expertise and skills to drive AI-enabled transformation.

Really simple to get started -

- Focused practical application of AI in your sector.
- Includes hands-on experiential learning around sector-specific real-world business use cases.
- Delivered by our practitioners to your practitioners.
- Needs no special equipment – just a laptop and headset to get started.

The program is a comprehensive, customizable, and flexible way to learn, because it:

- Is suitable for employees with both business-focused and technical backgrounds.
- Provides a mentor-led journey with constant guidance.
- Includes a high-level stream for senior decision-makers/business influencers.
- Incorporates a progressive learning path for all levels of technician: qualifying, professional, and expert.

- Equips participants with the precise skills and knowledge that are relevant to their job and level: Python, machine-learning algorithms, statistics and modeling techniques and applications, natural language processing, deep learning, neural networks, and so on.
- Is self-paced and can be customized for your business or for specific departments or employees.

In addition, the program offers proven yet dynamic content that is continuously updated to keep pace with business needs and the market. This is because it:

- Is regularly enhanced using participant feedback to improve the learning experience and increase engagement.
- Benefits from Capgemini's in-house research capabilities.
- Is further informed by automated techniques like AI for AI (software that uses social listening to sense the ever-evolving demand for AI skills and fine-tunes training content to match these skills).

Getting started

Capgemini AI Academy Practitioner's Program is your one-stop shop for AI-related capability development set out in six key areas.



Upskilling and personal transformation for your workforce

Take your people on a personalized growth journey empowering them to deliver real-world AI solutions at scale across your business. Each course is customized to ensure that it caters to your needs.

TECHNICAL APPROACH

Qualifying

Three days (6 hours)

An introductory course providing a high-level understanding of the various aspects of AI. Stimulates candidates' interest in AI and prepares them for the rest of the journey.

Professional

Four weeks (10 hrs. per week)

A technical course that focuses on concepts of ML, DL, and NLP techniques and their implementation using Python and top cloud-based AI platforms. Builds ability to derive meaning and generate insights from data by building AI/ML models.

Expert

Four weeks (10 hrs. per week)

A progressive continuation of the Professional course, this level dives into the detailed concepts around DL strategies advanced AI models, its workings, and applications, followed by custom AI & ML model building on cloud-based platforms Azure ML Services, AWS Sage Maker & GCP.

FUNCTIONAL APPROACH

Data Literacy

Four days (4 hours)

Business-oriented program that establishes the value of data, interpreting the types of business problems that data science & AI can solve. Basics of DS/AI concepts, toolkits and platforms covered.

Business Functional

Four weeks (10 hrs. per week)

Builds a solid foundation of various AI/ML techniques with implementation on cloud platforms. The use cases driven course enables participants to identify, frame, and develop solutions to key business problems AI can solve.

Business Influencer

Three days (15 hours)

Enables CXOs, business leads, and functional heads to formulate and strategize AI/ML projects at scale from an enterprise-wide transformation point of view, ensuring that key metrics for AI success are met.

Each participant's journey can be personalized to support their growth.

A tailored journey for each candidate

QUALIFYING

- Three six-hour days introduce the basics of AI including its evolution and impact, and the power of AI/ML.
- Instructor-led sessions help candidates understand ML, DL, and NLP and their application.
- By the end of the course, candidates will be able to interpret the types of business problems that AI can solve.
- Fully digital learning sessions with live mentoring throughout the course maximize impact.
- There are sectorial and functional insight deep dives via presentations and regular assessments.

Completion certificate

PROFESSIONAL

- This fully digital course teaches candidates how to work with huge datasets, how to build and interpret appropriate regression, classify and ensemble models for a given real-life business problem.
- The course introduces artificial NN, CNN, and RNN computer vision concepts via live mentoring throughout all sessions with ample opportunity to clarify issues that may arise.
- Hands-on programming sessions are followed by a capstone project, along with project-specific mentoring sessions. Successful completion of the project is a condition of progressing to Expert level.

Completion certificate

EXPERT

- Candidates learn how to identify, articulate, and scope AI/ML problems, and how to design a multi-layer artificial NN. Practitioners and SMEs provide mentoring through performing tonal and speech analytics using BERT, LSTM, etc.
- As well as live demonstrations of cloud environment configuration, further sessions look at deploying AI & ML models using Azure ML Studio/Services/ AWS Sage-maker/GCP, and building customized solutions for sector-specific business problems.
- A capstone project completes the course.

Completion certificate

Grab the chance to **get ahead** in AI

Capgemini's AI Academy Practitioner's Program delivers a personalized learning journey, ensuring you have the best talent in place to deliver real-world AI solutions at scale.



Backed by our passion for talent and technology, the Practitioner's Program focuses on the practical application of AI and offers insights-based learning around sector-specific, real-world business problems



Delivered by our practitioners to your practitioners, the program leverages mentorship by industry SMEs and domain specialists from Capgemini who have successfully implemented world-class AI solutions



Today's fast-paced data environment can make it hard to meet the challenge of AI-related talent. This program empowers you to deliver real-world AI solutions at scale across your business



It caters to a wide audience by customizing content for different levels of computer literacy, mathematical knowledge, and understanding the impact of decisions. No specialist equipment is required – just a laptop and headset



The Practitioner's Program gives you direct access to the knowledge and training expertise which is at the heart of everything we do.

Grab the opportunity to leverage our established and highly successful training program. Future-proof your workforce while helping them to prepare for a rich and rewarding career applying AI to solve your business challenges.





About Capgemini

Capgemini is a global leader in consulting, digital transformation, technology and engineering services. The Group is at the forefront of innovation to address the entire breadth of clients' opportunities in the evolving world of cloud, digital and platforms. Building on its strong 50-year+ heritage and deep industry-specific expertise, Capgemini enables organizations to realize their business ambitions through an array of services from strategy to operations. Capgemini is driven by the conviction that the business value of technology comes from and through people. Today, it is a multicultural company of 270,000 team members in almost 50 countries. With Altran, the Group reported 2019 combined revenues of €17billion.

Learn more about us at

www.Capgemini.com/AIAcademy

Perform AI

Artificial Intelligence.
Real World Solutions.

For more details contact:

Paramita Gupta

Vice President | Insights & Data

paramita.gupta@capgemini.com

Manik Seth

Senior Director | Insights & Data

manik.seth@capgemini.com



People matter, results count.

The information contained in this document is proprietary.

©2020 Capgemini. All rights reserved.