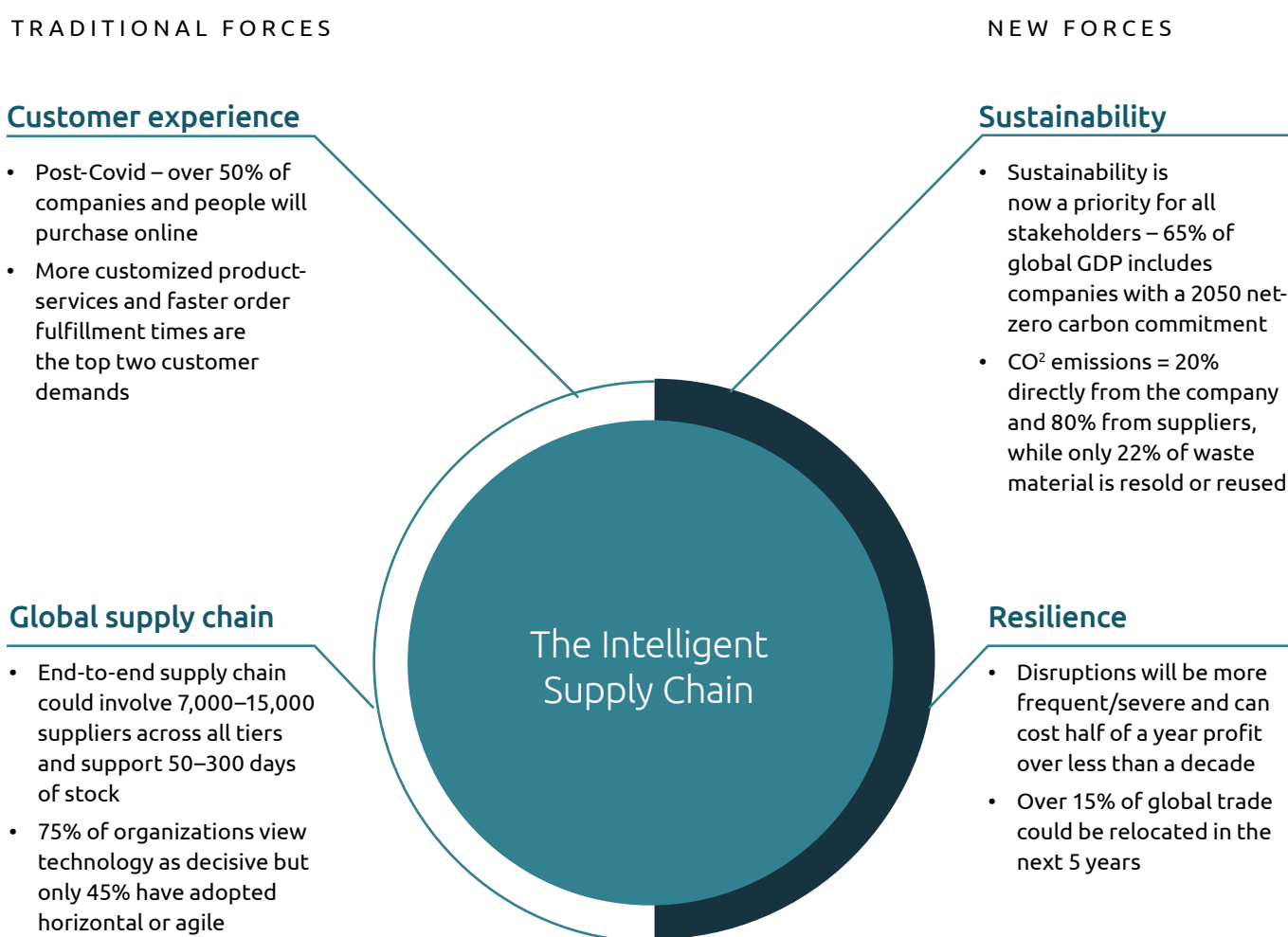
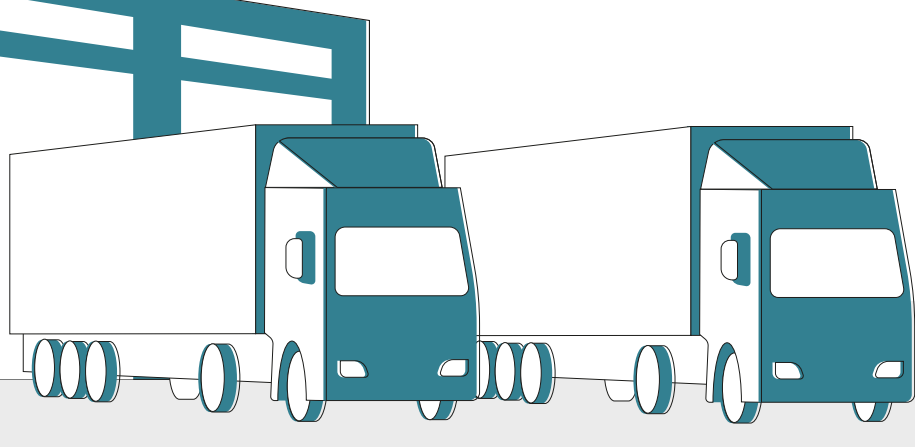
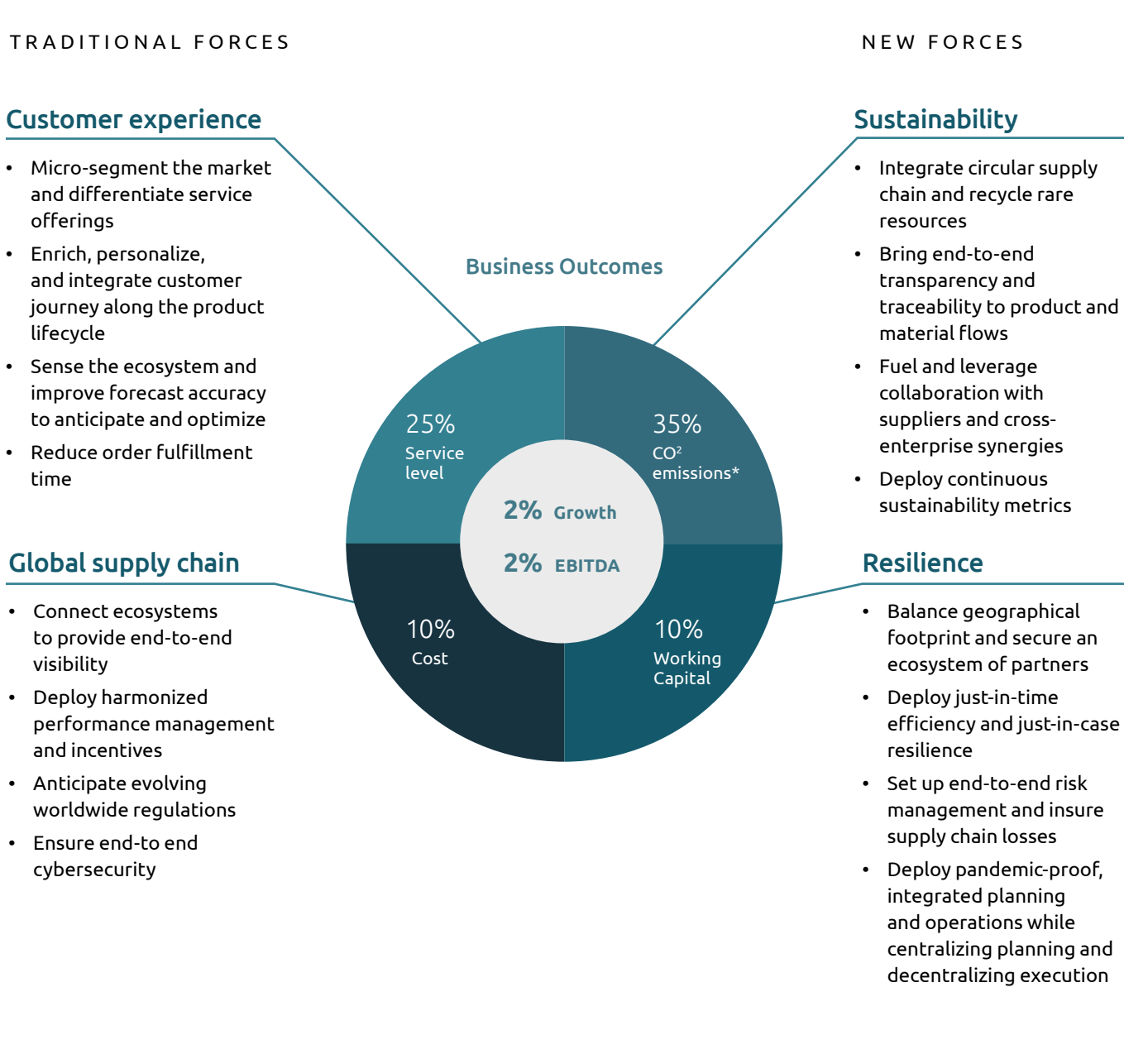


DRIVE RESILIENCE, PERFORMANCE, AND SUSTAINABILITY FOR AUGMENTED CUSTOMER CENTRICITY

Supply chain leaders are embracing a new supply chain paradigm



From traditional to intelligent supply chain – leveraging the full power of data and collaboration to address transformation challenges



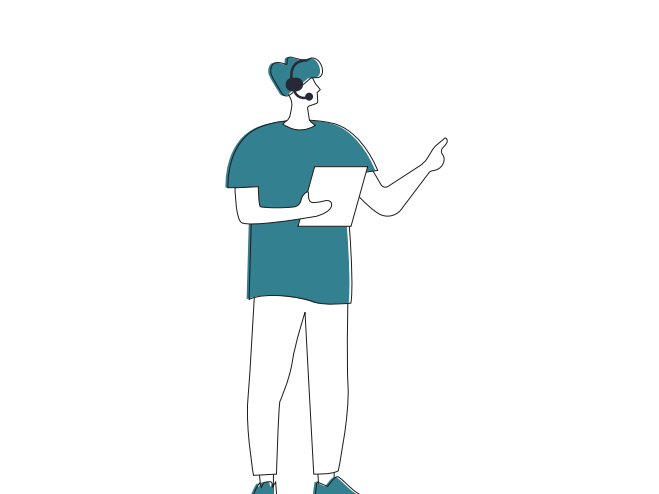
Addressing new business and technology challenges across resilience, customer experience, globalization, and sustainability

1 Intelligent network design and risk management

Segment end-markets, differentiate service offerings, and design intelligent supply chain networks – locations, inventories, flows – along product life cycle, while monitoring systemic risks over time

Unique business value:

- Combine supply chain expertise, data capabilities, and network design tools knowledge to define the best “resilience-performance-sustainability” compromise
- Enable a rapid start with network design demonstration, ABC² in the box, and cost-to-serve to qualify a first set of opportunities for network optimization



2 Smart forecasting and integrated business planning

Design, build, and deploy smart forecasting and integrated business planning to better anticipate customer demand while optimizing service, stock levels, and enterprise performance management

Unique business value:

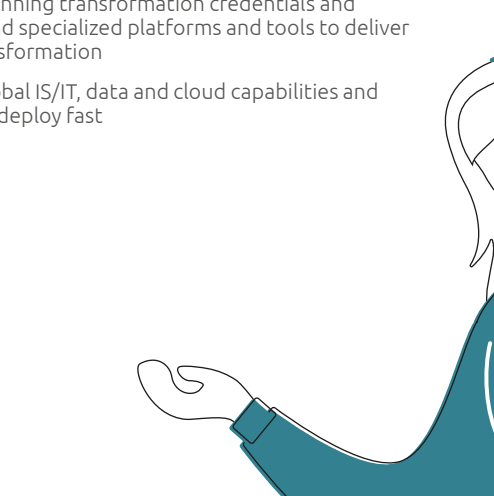
- Combine deep expertise in planning, AA/AI, APS tools, and IS/IT architecture/integration to make it happen
- Leverage planning transformation credentials and expertise, and specialized platforms and tools to deliver an agile transformation
- Leverage global IS/IT, data and cloud capabilities and footprint to deploy fast

3 360° sourcing analysis and supplier collaboration

Design, build, and deploy supplier scorecards – resilience, performance and sustainability – and collaborative platforms to constantly improve overall supplier effectiveness

Unique business value:

- Mobilize multidiscipline purchasing and procure it happen
- Leverage a PEPS framework to scope the transformation, and on-shelf analytics and risks assessment/monitoring tools to quickly deliver a 360° analysis proof of concept
- Leverage pre-built solutions and tools to implement and deploy fast



4 Touchless and agile order to delivery

Architect, integrate, and deploy IS solutions and automation, from smart order management to agile warehousing and transportation, to optimize customer experiences and operations

Unique business value:

- Combine multi-discipline execution system capabilities, IS/IT architecture capabilities, and technological ecosystem to make it happen
- Leverage a set of assessment grid, tools, and credentials across execution systems to scope and qualify
- Lean on an iCaptivate framework and leverage pre-configured industry solutions to implement and go fast



5 Supply chain as-a-service

Provide externalized business services along the supply chain while progressively applying best practices and digitalization

Unique business value:

- Combine global and multi-discipline supply chain expertise and deep knowledge of solutions to steer business services transformation
- Leverage a process transformation platform, methodology, and experience across industries to scope the transformation
- Leverage business services hubs, pre-configured solutions and tools, and a supply chain academy to scale fast



6 Supply chain control tower and end-to-end performance management

Design, integrate, and deploy cloud-based supply chain platforms to progressively provide end-to-end visibility, traceability, and advanced event monitoring capabilities while driving end-to-end performance

Unique business value:

- Combine end-to-end supply chain expertise, extended system integration capabilities, and a technological ecosystem of solutions, hyperscalers to steer your journey
- Use on-shelf supply chain control tower assets (assessment grid/tools, analytics, reference architecture) and experience to showcase and proof value
- Leverage data and AI, move to cloud, and cybersecurity frameworks and tools for industrialization

